

Faith for
Cities

Conversation about Data

Convening Event 1/3

March 5th 2024

4pm — 6pm UTC



synergine.

relight.co



Welcome to this 2 hour conversation about data

Who's leading this journey?

FfC team

- Chris Elisara
- Niels Mose Møller

Data and SDG Cities Experts

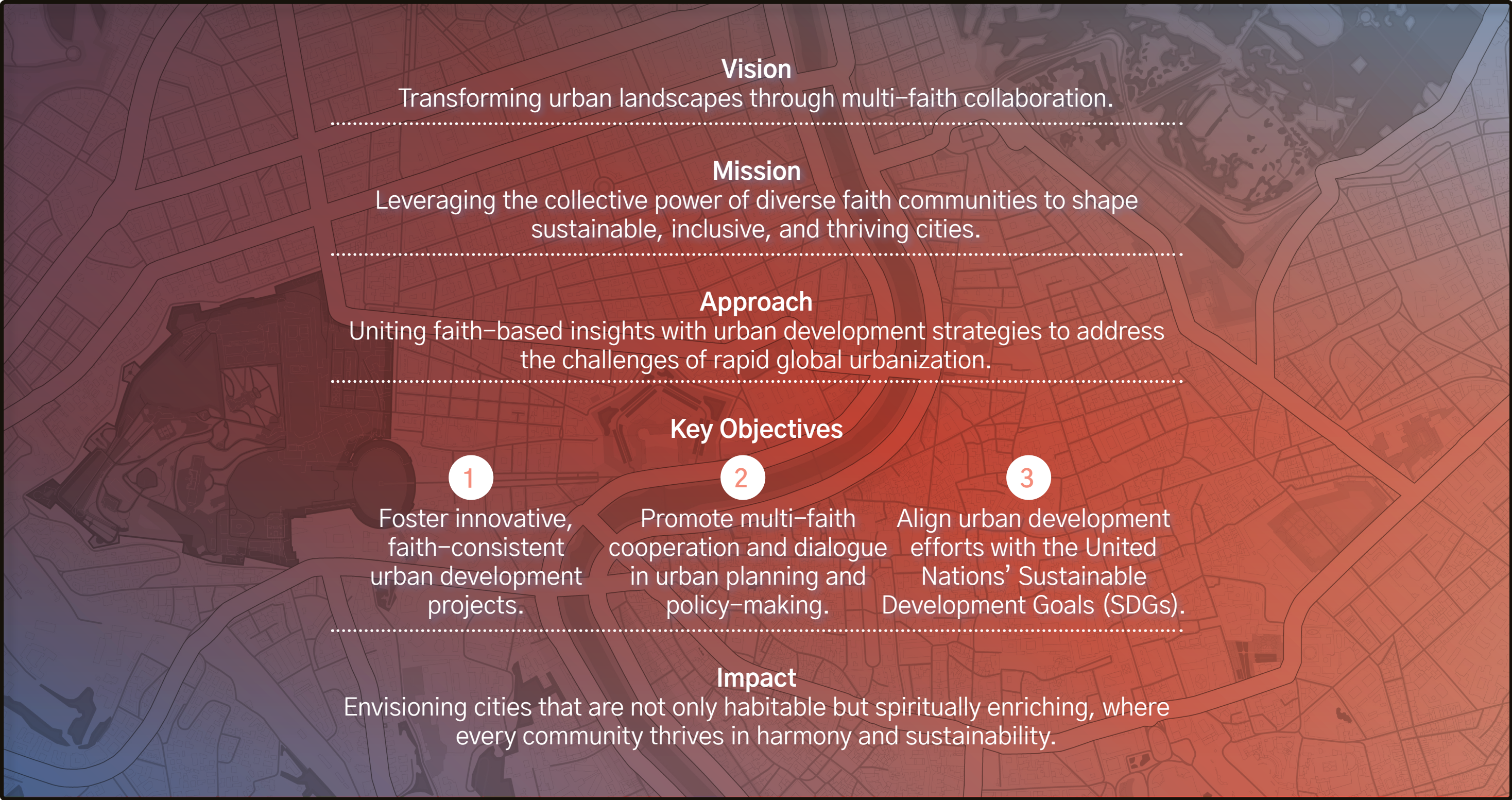
- Dyfed Aubrey
- Robert Ndugwa
- Charlie Henderson



Introductions continued....



Welcome to Faith *for* Cities



Faith *for* Cities and SDG Cities

How is FfC helping the faith’s lean into their stakeholder role in the development of cities, towns and neighborhoods?

By developing a faith-based program that can plug seemingly into UN-Habitat’s SDG Cities initiative.

The SDG Cities Initiative is a UN-Habitat initiative designed to help 1000 cities and over a billion people develop and meet the SDG’s.

SDG Cities has a methodology to achieve this goal, which means a faith-based SDG’s Cities program must also adopt the same methodology in order to plug into SDG Cities.

What is the COMMON methodology SDG Cities and FfC is using?



Robert Ndugwa, PhD,
Knowledge and Innovations Branch,
UN-Habitat



Supports countries to implement the urban dimensions of the sustainable development agenda (make cities and human settlements inclusive, safe, resilient and sustainable).

.....

Contributes through

- Cutting-edge knowledge
 - Policy advice
 - Technical norms
 - Practices and standards
 - Advocacy for political discussion
 - Innovation and collaborative action
-

Spatial Data Focus

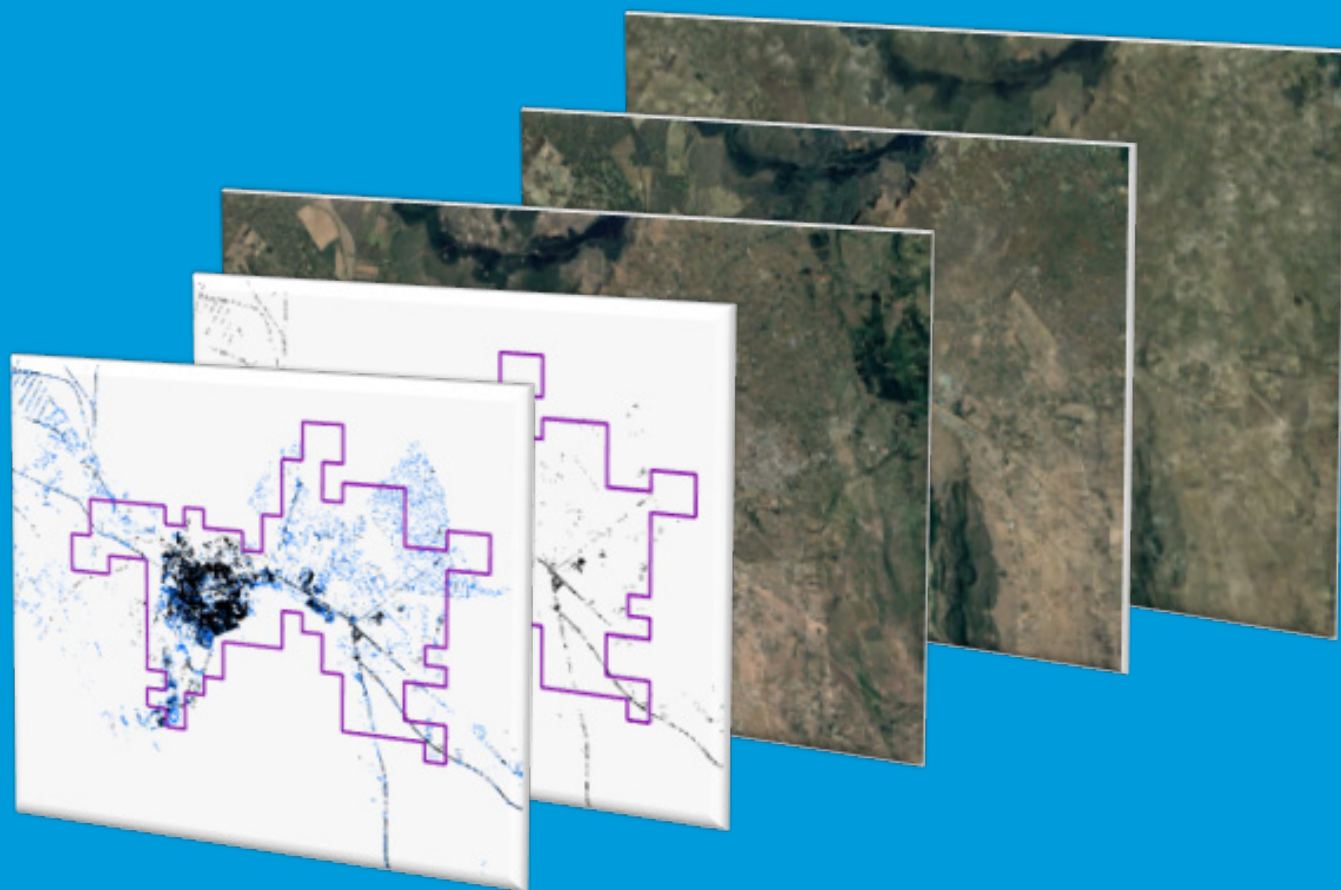
- City level data
- Multi-temporal data
- Spatially disaggregated data
- Data layers overlay



Urbanization monitoring for SDGs and NUA defines our core work

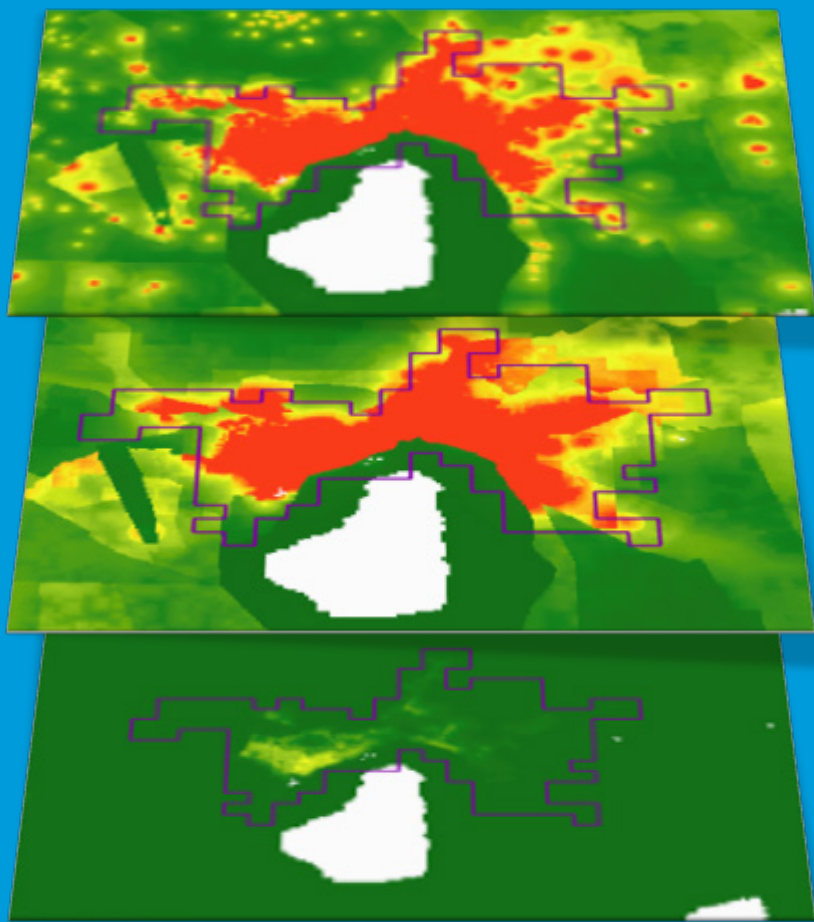


Urban Expansion



Data

Satellite data from imagery, local or global datasets eg GHSL.

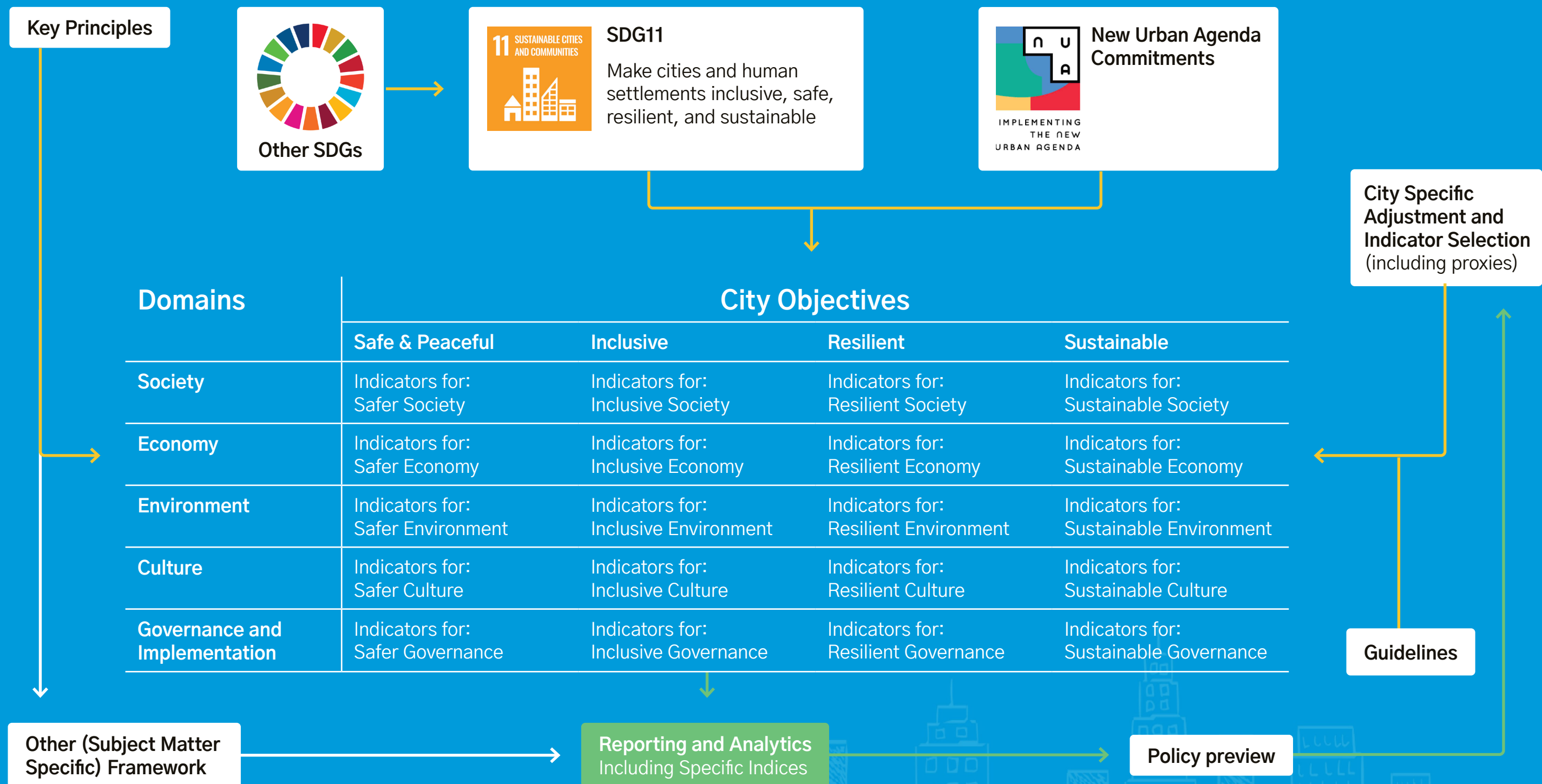


Data

Gridded data e.g. country modeled, GHSL.

Bringing urban monitoring in a single space

The Urban Monitoring Framework



Data Track

Global Urban Monitoring Framework

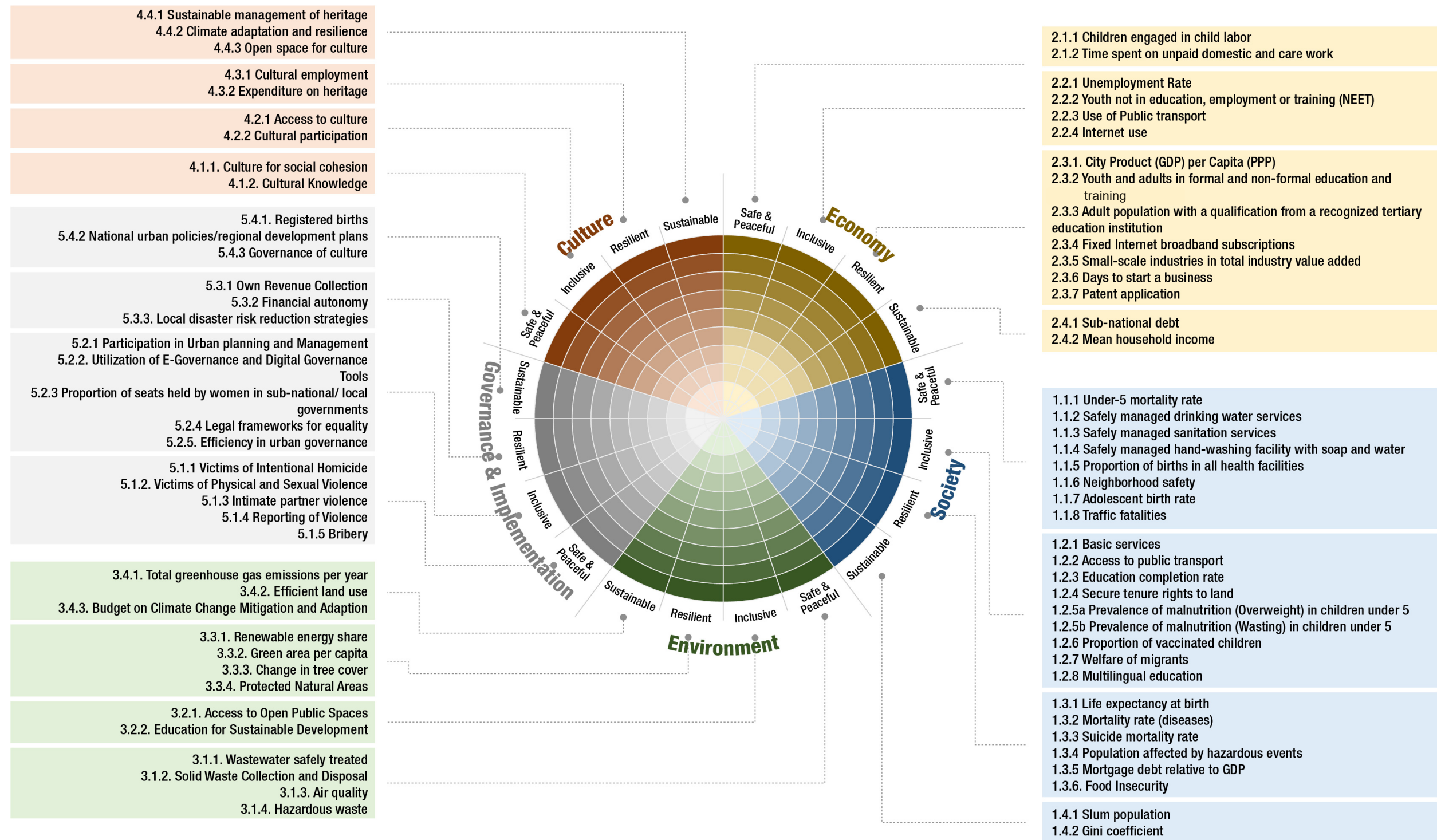
To ensure a simple but effective approach to monitoring the performance of cities against the Sustainable Development Goals, the New Urban Agenda and the Paris Climate Agreement, the **Global Urban Monitoring Framework** identifies 72 indicators that are most relevant to cities and clusters them within 20 attributes. It is designed to be efficient, effective and harmonized

The **Global Urban Monitoring Framework** is constructed on the basis of four City Objectives: Safe & Peaceful, Inclusive, Resilient and Sustainable, as captured in SDG 11 and reflected across several other SDGs, and five common domains of sustainable development: Society, Economy, Environment, Culture, Governance and Implementation.

These axes intersect to create 20 attributes, to which indicators are attached from the SDGs, NUA and other global agendas

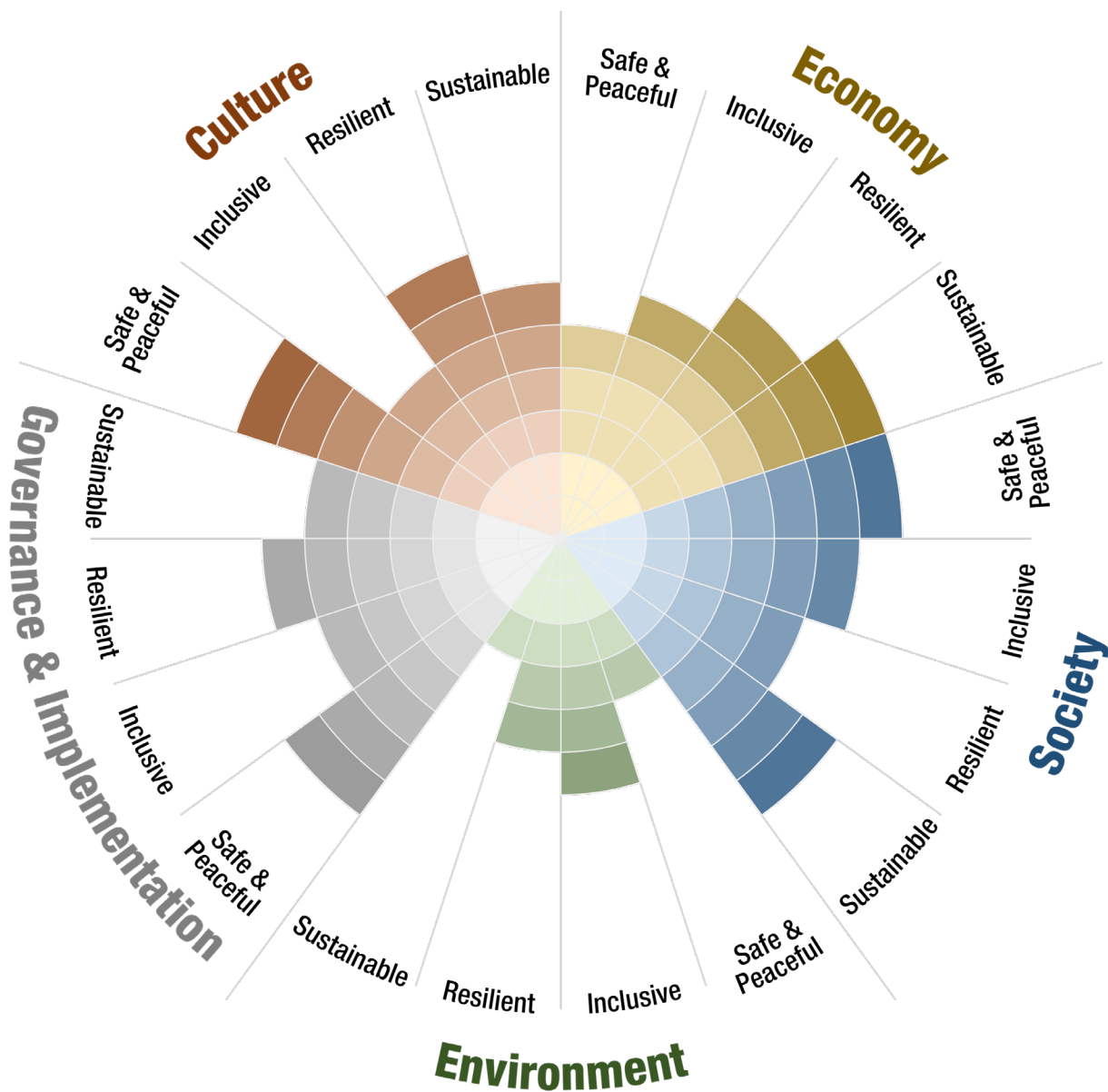
Domains	City Objectives			
	Safe & Peaceful	Inclusive	Resilient	Sustainable
Society	Indicators for: Safer Society	Indicators for: Inclusive Society	Indicators for: Resilient Society	Indicators for: Sustainable Society
Economy	Indicators for: Safer Economy	Indicators for: Inclusive Economy	Indicators for: Resilient Economy	Indicators for: Sustainable Economy
Environment	Indicators for: Safer Environment	Indicators for: Inclusive Environment	Indicators for: Resilient Environment	Indicators for: Sustainable Environment
Culture	Indicators for: Safer Culture	Indicators for: Inclusive Culture	Indicators for: Resilient Culture	Indicators for: Sustainable Culture
Governance and Implementation	Indicators for: Safer Governance	Indicators for: Inclusive Governance	Indicators for: Resilient Governance	Indicators for: Sustainable Governance

The UMF Wheel Diagram

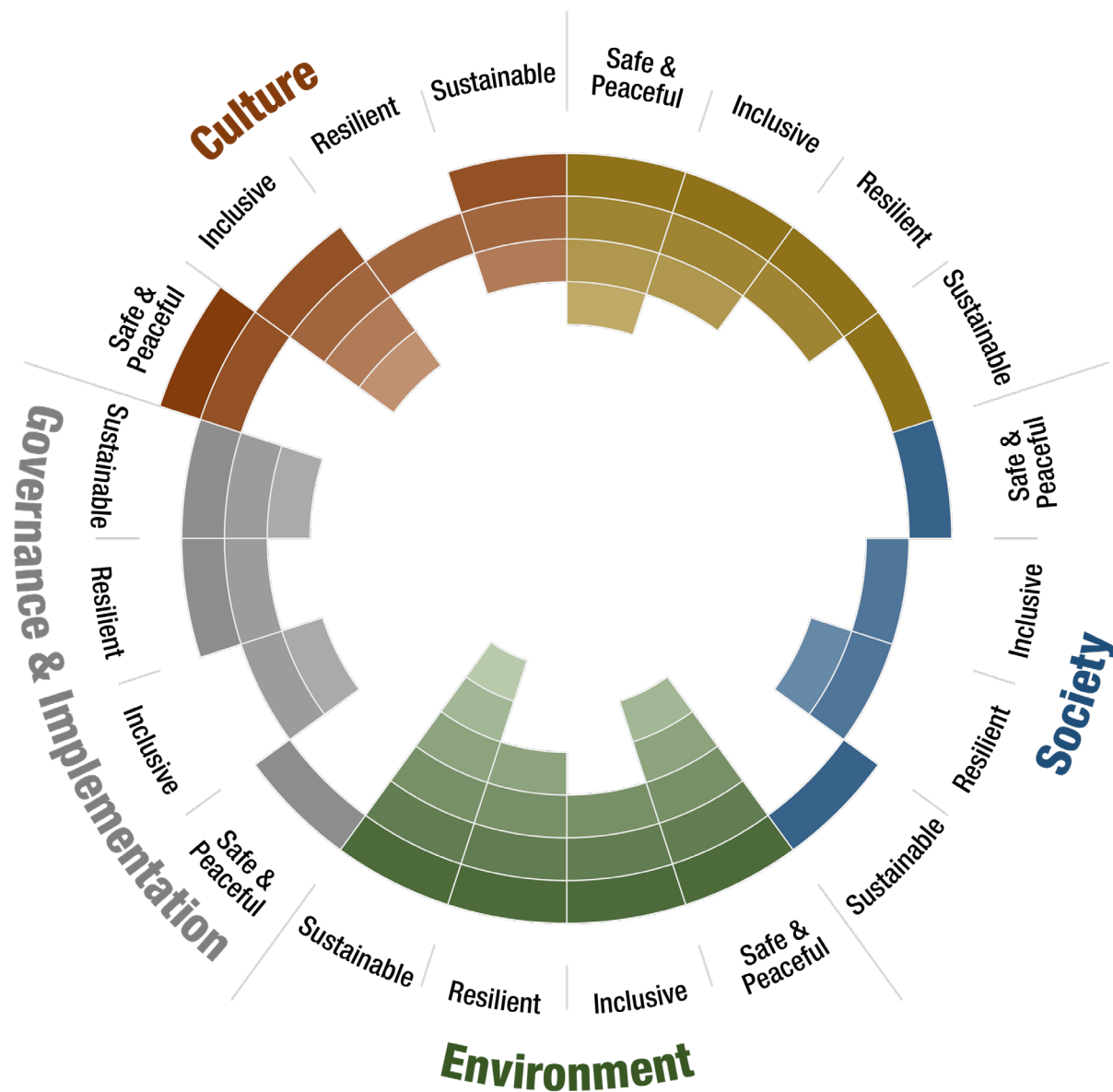


Urban Monitoring Framework

From city diagnostics to action

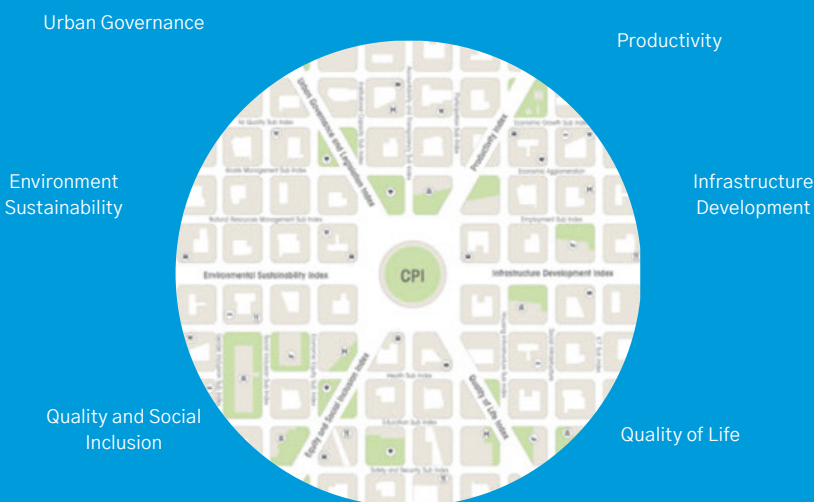


Baseline establishment

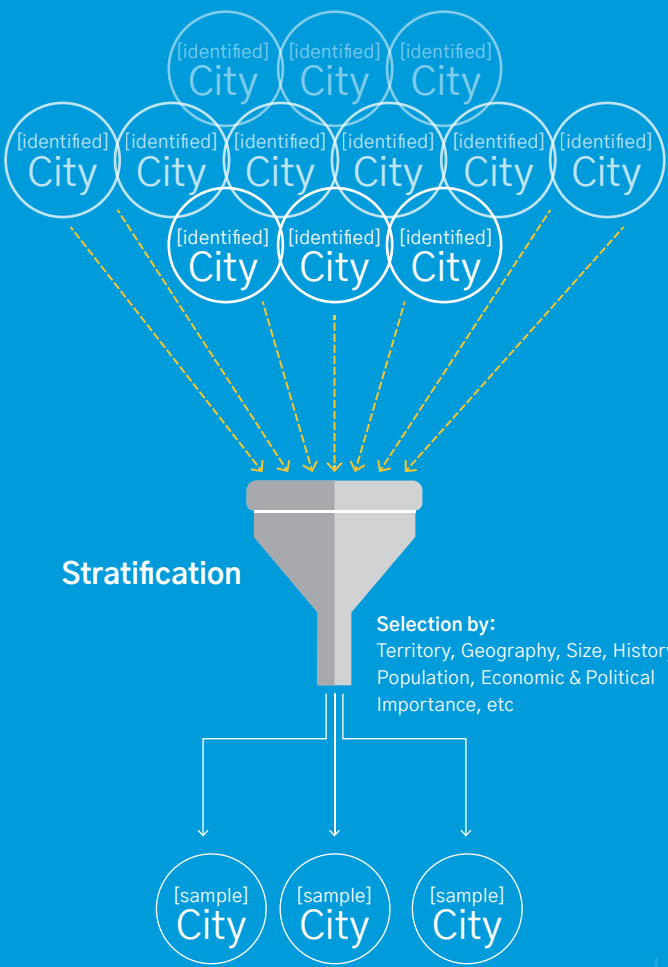


Gap + actions identification

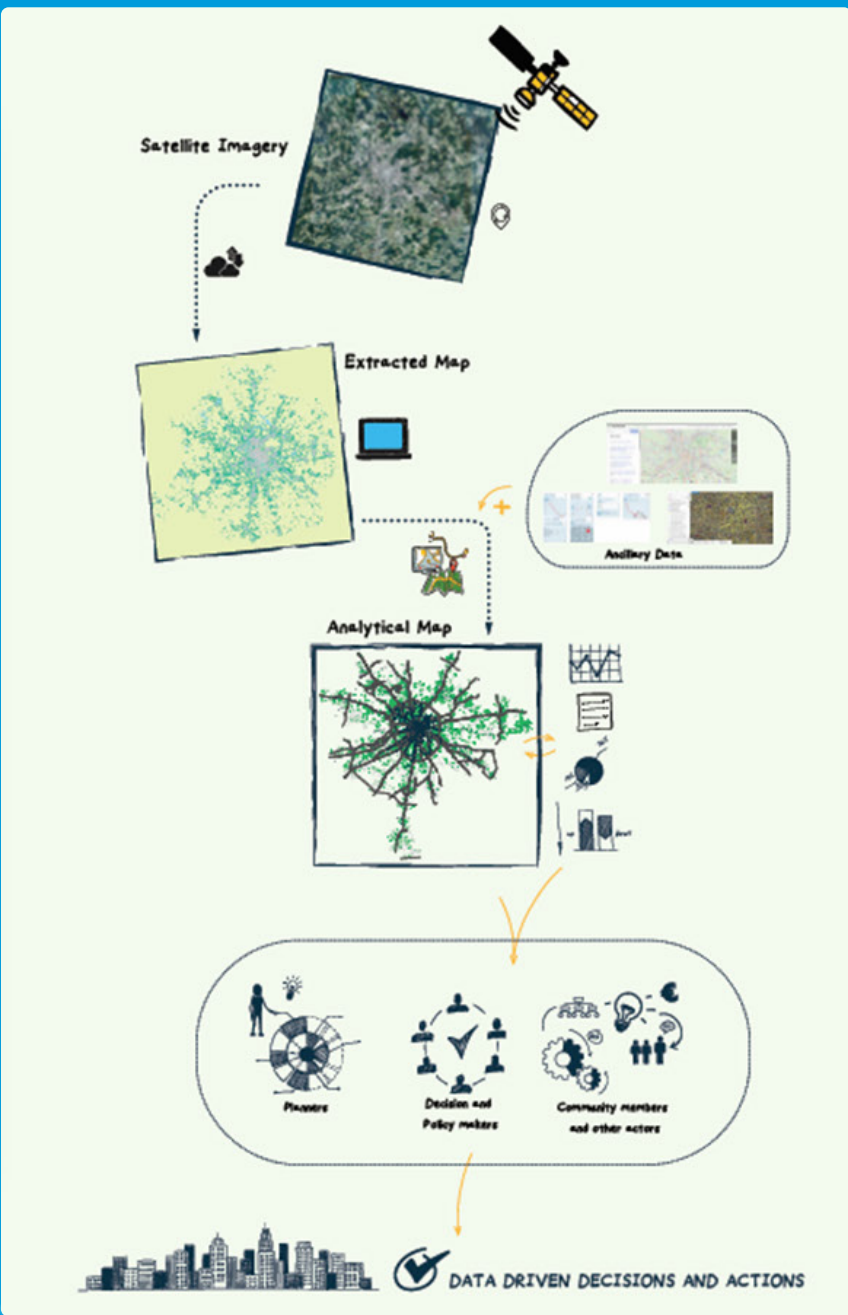
City Prosperity Index – under revision



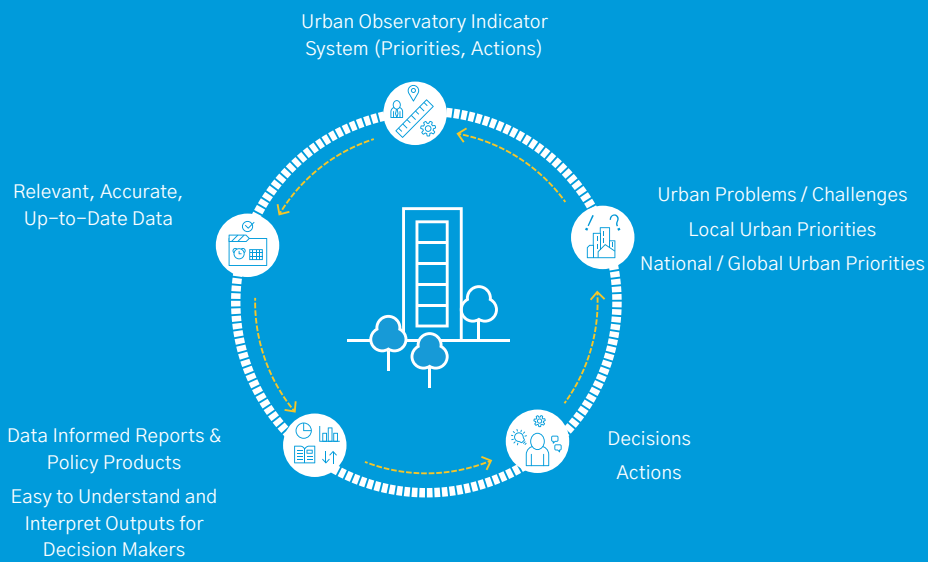
National Sample of Cities



Spatial Data Integration Models



The Urban Observatory Model



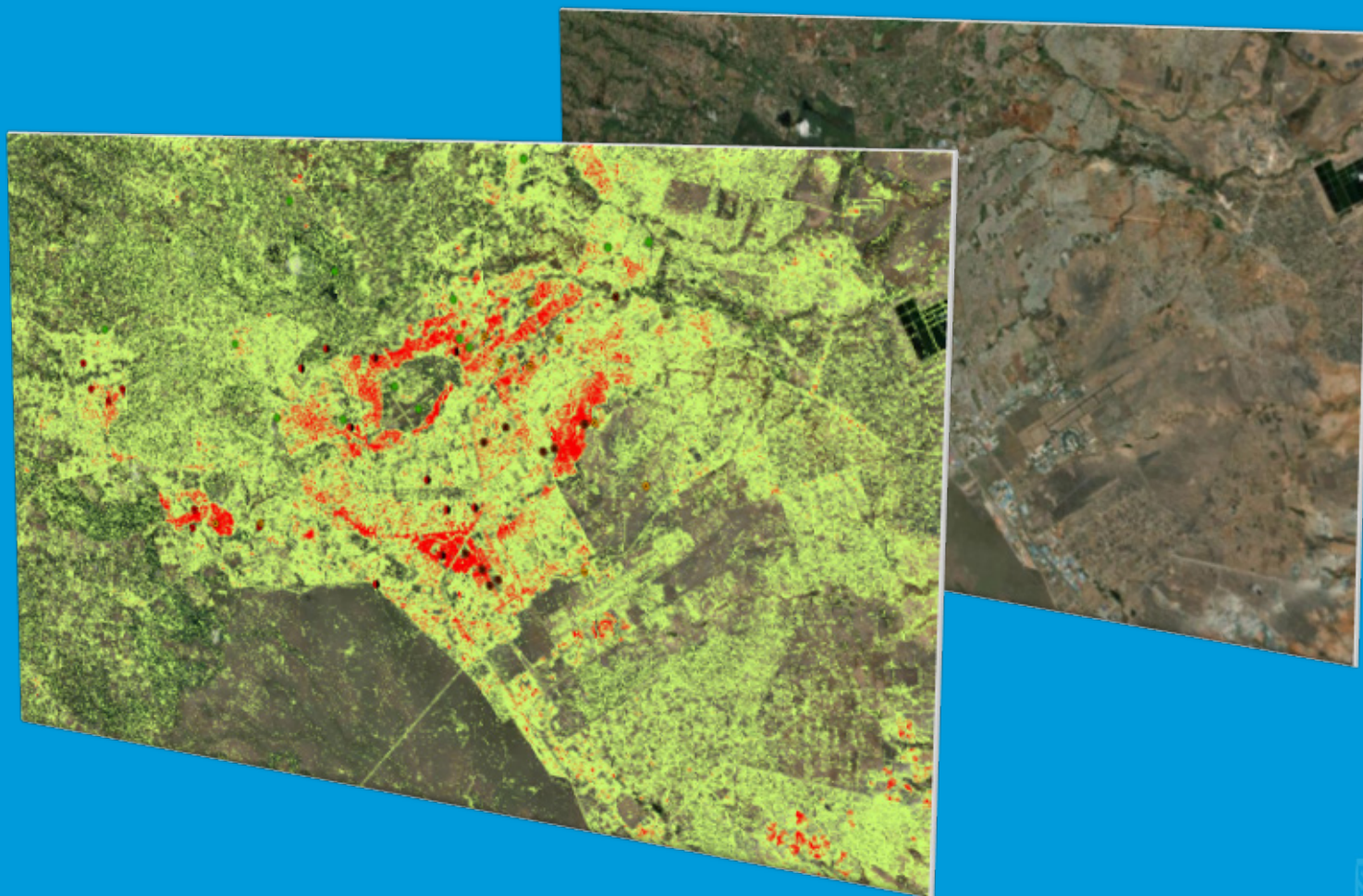
e.g Slums and informality

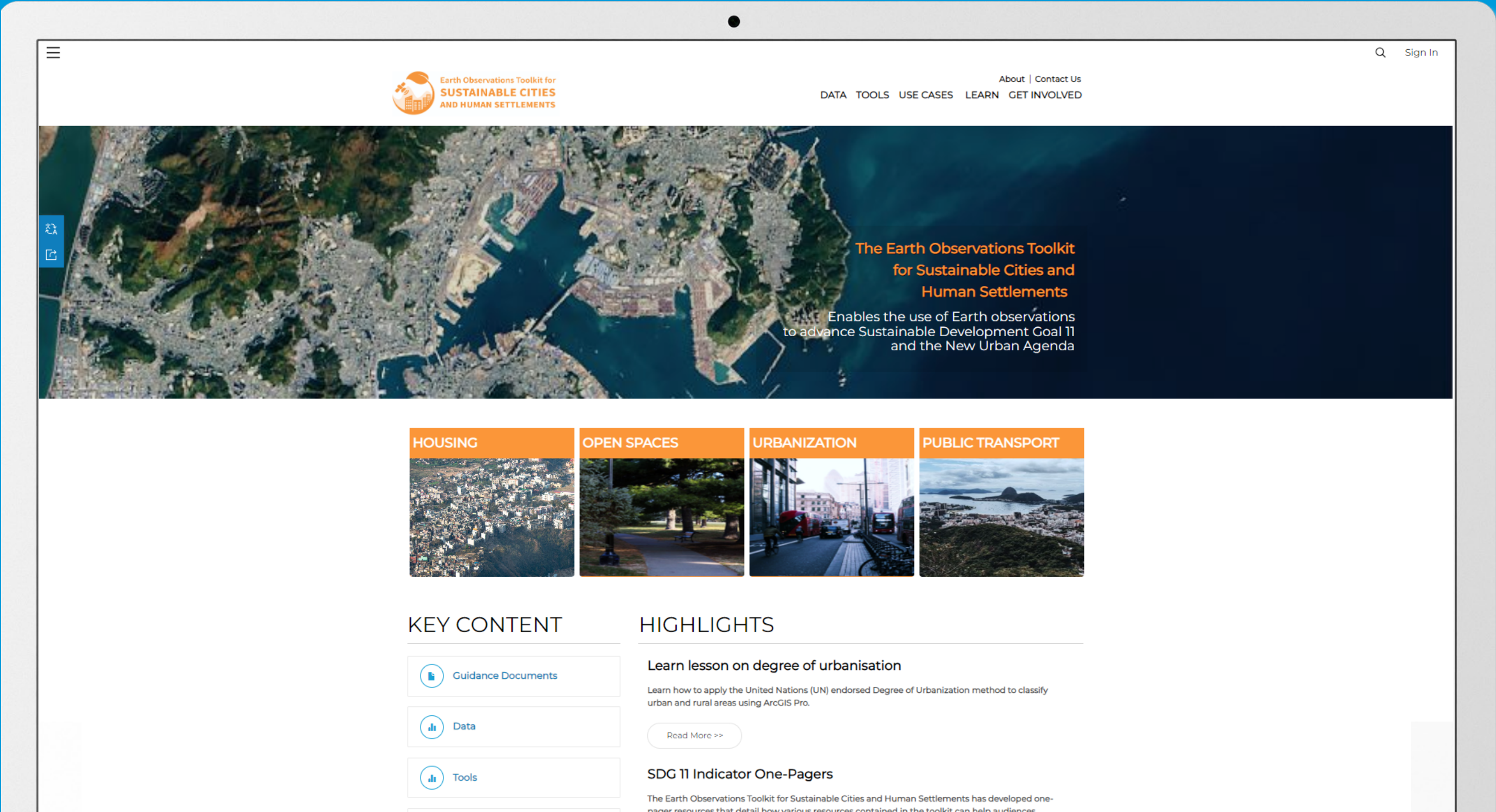


Settlement morphology delineation (Indicator 11.1.1)

Informality manifests differently within & across cities

Under-development model considers variations in scale, settlement structure based on morphological parameters and multi-level services access – Data from sources such as GHG-built and GHS-pop providing key inputs to analysis of vulnerability.





COVID-19 urban data



Tracking COVID-19 in Cities

COVID-19 has caused major disruptions in the way of life and how people and places interact, with urban areas - where physical interactions are often higher than rural areas - experiencing high levels of impact from the pandemic. As part of its contribution to enhancing better response and recovery in urban areas, UN-Habitat collects city-level COVID-19 data on total cases, infection rates, total deaths and total recoveries.

[Visualize & Download Data](#)



Mapping Facilities in Informal Settlements

Informal settlements are highly vulnerable to the impacts of COVID-19, owing to their high levels of congestion, limited access to basic water and sanitation services and their exposure to economic shocks. Since 2020, UN-Habitat has worked with different partners to map out basic infrastructure facilities and services available to communities living in slums and informal settlement communities in Kenya, Uganda and South Sudan.

[Read More ..](#)



COVID-19 Cities Readiness and Response Tracker

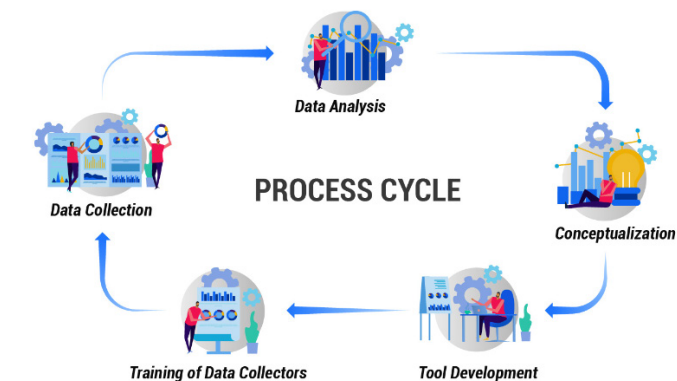
To respond to acute data challenges in the early days of the COVID-19 pandemic, UN-Habitat and CitiiQ developed a COVID-19 city tracker. The tracker has a readiness and response score which are based on 50 indicators across 9 dimensions: public health capacity, societal strength, economic ability, infrastructure, national collaborative will; spread response, treatment response, economic response and supply chain response.

[Explore the Tracker \(External Link\) ..](#)

Promoting data transparency and openness

Mapping and data collection approach

The surveys utilized the KoboToolbox mobile phone application, to map each of the target facilities and fill information on its metadata. Field data collection was done by youth volunteers resident within each of the sampled settlements. Volunteers were trained by UN-Habitat's Data and Analytics Section staff over a period of 1-2 days, from where they were deployed in different teams spread throughout the target settlements. Data collection was undertaken over a period ranging from 5 to 20 days, depending on the size of the settlement/area covered.



Download data



KAWANGWARE



KIBERA



KISUMU



MATHARE

Download Reports



COVID-19 Facilities Mapping Report, Kawangware informal settlements, Nairobi, Kenya

[Download Report](#)



Juba Settlement and Facilities Distribution Profile

[Download Report](#)



COVID-19 Facilities Mapping Report, Kibera Slums, Nairobi, Kenya

[Download Report](#)



COVID-19 Facilities Mapping Report, Mathare Slums, Nairobi, Kenya

[Download Report](#)

Reports and Profiles



COVID-19 Facilities Mapping Report, Kawangware informal settlements, Nairobi, Kenya

[Download Report](#)



Juba Settlement and Facilities Distribution Profile

[Download Report](#)



COVID-19 Facilities Mapping Report, Kibera Slums, Nairobi, Kenya

[Download Report](#)



COVID-19 Facilities Mapping Report, Mathare Slums, Nairobi, Kenya

[Download Report](#)



Thank you

Data

City Data: Story of a Baltimore Pastor

Pre-k Education in Baltimore



Relight

We're Asking Questions of the Network

Relight is a platform for bringing to light 3 things:

1

Bring Faith Organizations into Network

Problem statement

Faith organizations & leaders need to become a part of the urban development conversation.

Opportunity

Funders like Templeton see this as a problem and want to fund the involvement of faith-based groups as a participant in the city planning & urban development process.

Solution

The diagnostic tooling needed to run the city planning process like SDG Cities needs to be expanded to include faith-based tools.

Our Purpose

To assess and enhance existing faith-based diagnostic tools' contribution to the city planning/ VLR process and/or faith based development projects and plans.

Network: We are the first group in this network.

2

Ask Questions

Two primary questions

1.

What are the tools that exist? What are they measuring? What's unique about the religious perspective? What's the value added for religious data? What tools exist outside the network that should be brought in?
2.

What gaps in these tools and what new tools need to exist? What are the needs and the challenges? (What do you need?).

3

Fund Dev & Deployment of Diagnostic Solutions

Fund the development and deployment of tools within SDG Cities.

Based upon our understanding of question 1 and 2, what are the solutions to the challenges we have? The needs that we have? How can we make the tools everyone has better? How to make them fit with SDG's? How can we make it collaborative? That's what we're going to do on Relight. Those solutions become named, described, and then grant will fund the development and deployment of those solution.



Next convenings



We are inviting leaders and organizations working in the overlapping areas of religion and urban design, planning, architecture, landscape architecture, placemaking, public engagement, etc. to a new initiative promoting intentional collaboration. With practitioners who are willing, we are building a collaborative community that supports a global commons at the intersection of faith and urban design that will benefit all the stakeholders working in this space.

.....

26th March, 2024

Time: 4 PM (UTC)
9:00 AM (Pacific) / 12:00 PM (New York) / 4:00 PM (London)
/ 7:00 PM (Nairobi) / 5:00 AM (Auckland, next day)



We are inviting leaders and organizations working in the overlapping areas of religion and faith-consistent finance, project developers that develop and/or finance urban projects to a new initiative promoting intentional collaboration. With practitioners who are willing, we are building a collaborative community that supports a global commons at the intersection of faith and finance/project developers that will benefit all the stakeholders working in this space.

.....

9th April, 2024

Time: 4 PM (UTC)
9:00 AM (Pacific) / 12:00 PM (New York) / 5:00 PM (London)
/ 7:00 PM (Nairobi) / 4:00 AM (Auckland, next day)